



National Heaters Industries Co. LLC

P.O. Box. 58, Rusayl - 124, Sultanate of Oman

Tel.: (+968) 24446302, Fax: (+968) 24446301, E-mail: nhi@omzest.com

Website: <http://www.nhi-omzest.com>

(An Omzest Group Company)



'Hotex' the brand trusted by millions for over 35 years!!!

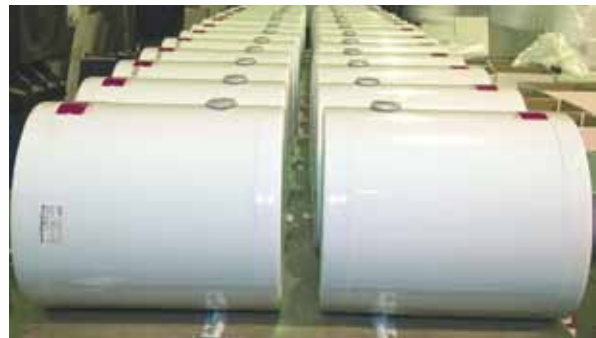


SETTING THE STANDARDS FOR WATER HEATER





National heaters industries is one of the prestigious company of the Omzest conglomerate comprising of over seventy Companies spanning over Manufacturing, Banking, Training Travel, Tourism, Agriculture, Finance etc. National Heaters Industries is one of the leading manufactureres of electrical water heaters in the Middle East.



National Heater's "HOTEX" has become a benchmark for others in the region. Superior quality raw materials, modern manufacturing process with full backward integration, stringent quality assurance at every stage and on going product improvement through R & D has made "HOTEX" the preferred brand among the discerning customers.



A team of professionals and skilled technicians, extensive distribution network and prompt service ensure quality, safety, durability, reliability and easy availability at an affordable price.

Description-Storage Water heater (SWH)	Details	Page Nos
Features & Benefits		1-2
Copper Premium SWH	Sizes & Specifications	3-5
Glass Lined SWH	General Information	6
Hotex Glass Lined Plus SWH	Sizes & Specifications	7
Hotex Glass Lined Xtra SWH	Sizes & Specifications	8
Hotex Glass Lined Classic SWH	Sizes & Specifications	9
Galvanized Iron(GI) Premium SWH	General Information	10
Hotex GI Premium SWH	Sizes & Specifications	11-13
Hotex Slim SWH	Sizes & Specifications	14
Galvanized Iron(GI) Regular SWH	General Information	15
Hotex GI Regular SWH	Sizes & Specifications	16
Information related to accessories and add-ons		17-18
Cut Section View	Galvanized Iron (GI)	19
Cut Section View	Glass Lined (GL)	20

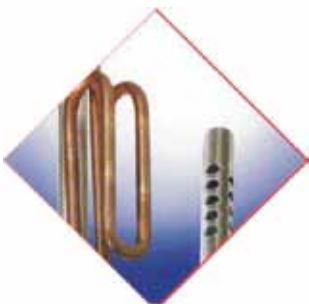




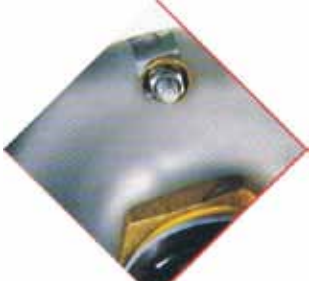
Safety Valve



Polyurethane Insulation



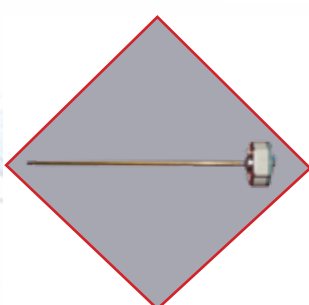
Anti-Splash Mechanism



Earthing Device



Thermometer



Thermostat

Standard Features

☞ Triple layered Safety

- ❖ Dual action Safety valve-releasing excess pressure, non return valve (NRV) prevents reverse flow of water minimizing any chances of dry heating.
- ❖ Preventive cutoff of power in case of any failure of thermostat.
- ❖ An earthing device socket is provided to ensure safety of user.

☞ Thermostat:

- ❖ Ensures maintenance of water temperature to the desired level.

☞ CFC Free PUF

- ❖ Environmental friendly CFC free PUF acts as insulation.

☞ Optimix Technology

- ❖ The Optimix technology optimizes the mix of water to ensure efficient flow of hot water.

☞ Heating Element

- ❖ Composed of High Quality materials, this is encased in copper tubing.

☞ Indicators

- ❖ Neon light to indicate the heater "On" Mode
- ❖ Dial type thermometer indicates temperature of hot water.

☞ Outer Body

- ❖ Outer body is made from Cold Rolled Annealed Steel which is powder coated and oven baked for durability.

☞ Quality Management System(ISO 9001, ISO 14001 & OHSAS 18001 certified)

- ❖ Pressure tested
- ❖ 100% Input process checks
- ❖ Random finished good check

The output of our quality management system gets reinforced by our meeting compliances as mentioned below in the table.



Standard	Compliances ratified by <i>International Electrotechnical Commission (IEC)</i>
IEC 60335-1:2010	Household and similar electrical appliances - Safety - Part 1: General requirements
IEC 60335-2-21:2012	Household and similar electrical appliances - Safety - Part 2-21: Particular requirements for storage water heaters
IEC 61000-2-2:2014	Electromagnetic compatibility (EMC) - Part 2-2: Environment - Compatibility levels for low-frequency conducted disturbances and signaling in public low-voltage power supply systems
IEC 61000-3-3:2013	Electromagnetic compatibility (EMC) - Part 3-3: Limits - Limitation of voltage changes, voltage fluctuations and flicker in public low-voltage supply systems, for equipment with rated current ≤ 16 A per phase and not subject to conditional connection
Standard	Compliances ratified by <i>Comité International Spécial des Perturbations Radioélectriques</i>
CISPR 14-1:2005	Electromagnetic compatibility - Requirements for household appliances, electric tools and similar apparatus - Part 1: Emission
CISPR 14-2:2015	Electromagnetic compatibility - Requirements for household appliances, electric tools and similar apparatus - Part 2: Immunity - Product family standard



Omani



G-mark



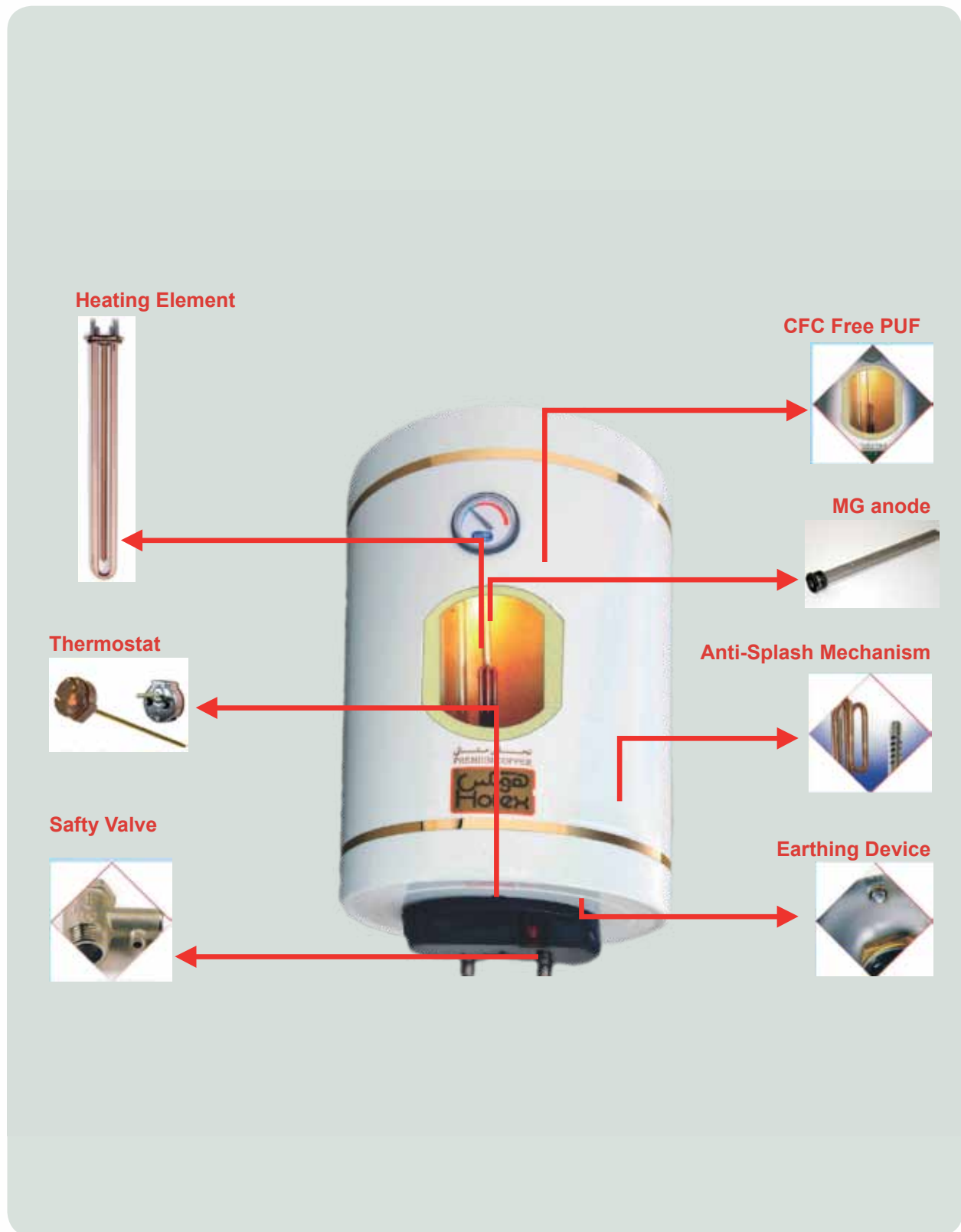
Emirates Quality



Quality Management System



Bahrain Safety Standard





GENERAL INFORMATION

The boiler of copper water heater is made from 99.85% pure copper, conforming to BS 2870/ C106. Copper interiors assures you hygienic water at all times. As copper is self protecting, you are also assured of extra long life of the water heater.

Note:

- Thermal safety cut-out, manually resettable.
- Special element with Zinc Anode protection for aggressive water.
- Rated voltage - 220-240V, 50-60 Hz.
- Elements available in 1.6-1.8, 2.1-2.4, 2.9-3.1 kW rating.

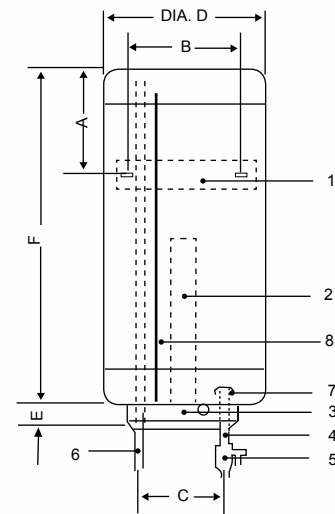


**“HOTEX” PREMIUM COPPER
THE FIT AND FORGET WATER HEATER**

VERTICAL WALL MOUNTING “P” SERIES

MODEL NO.		P010BB	P030BB	P050BB	P080BB	P100BB	P120BB	P0150BB
CAPACITY IN LTS.		10	30	50	80	100	120	150
Dimensions (mm)	A	120	165	165	170	170	170	170
	B	210	265	265	265	265	265	280
	C	80	100	100	100	100	100	100
	D	250	400	400	450	450	450	450
	E	45	45	45	45	45	45	45
	F	450	420	570	690	840	990	1180
APPROX.WT.IN kg		6.0	12.0	16.5	21.5	24.5	29.0	34.5
RATED INPUT-kW		1.6-1.8			1.6-1.8 / 2.1-2.4		2.9-3.1	
RATED PRESSURE		0.6 MPa						
POWER SUPPLY		Single Phase						
HEAT INSULATION		Polyurethane Foam						
I/O SIZE-B.S.P.T.		1/2"						3/4"
I/O POSITION		Bottom**						

1. MOUNTING BRACKET
2. HEATING ELEMENT
3. ELEMENT COVER
4. INLET PIPE
5. SAFETY VALVE
6. OUTLET PIPE
7. ANTI-SPLASH MECHANISM
8. ZINC ANODE

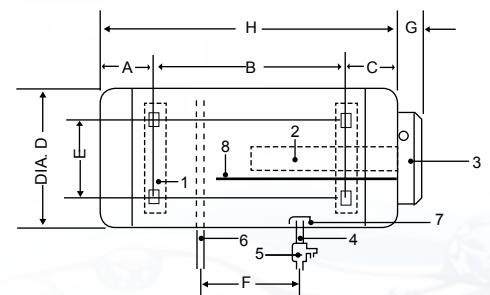


HORIZONTAL WALL MOUNTING “Q” SERIES

MODEL NO.		Q010BB	Q030SS	Q050BB	Q080BB	Q100BB	Q0120BB	Q0150BB
CAPACITY IN LTS.		10	30	50	80	100	120	150
Dimensions (mm)	A	120	130	160	165	170	170	170
	B	210	160	250	360	500	650	840
	C	120	130	160	165	170	170	170
	D	250	400	400	450	450	450	450
	E	210	265	265	265	265	265	280
	F	220	**	160	160	160	160	160
	G	45	45	45	45	45	45	45
	H	450	420	570	690	840	990	1180
APPROX.WT.IN kg		6.0	12.0	16.5	21.5	24.5	29.0	34.5
RATED INPUT-kW		1.6-1.8			1.6-1.8 / 2.1-2.4		2.9-3.1	
RATED PRESSURE		0.6 MPa						
POWER SUPPLY		Single Phase						
HEAT INSULATION		Polyurethane Foam						
I/O SIZE-B.S.P.T.		1/2"						3/4"
I/O POSITION		Bottom**						

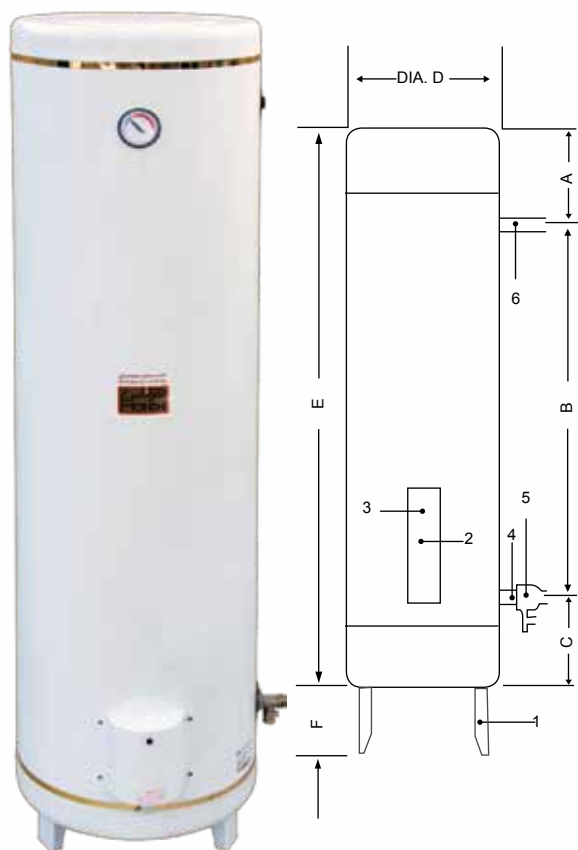
Note: **In 30 Lts. intel/outlet at side only - distance between pipes is 310 mm

1. MOUNTING BRACKETS
2. HEATING ELEMENT
3. ELEMENT COVER
4. INLET PIPE
5. SAFETY VALVE
6. OUTLET PIPE
7. ANTI-SPLASH MECHANISM
8. ZINC ANODE



“HOTEX” PREMIUM COPPER
THE FIT AND FORGET WATER HEATER

VERTICAL FLOOR MOUNTING “R” SERIES



MODEL NOS.		R100SS	R120SS	R150SS	R180SS	R200SS
CAPACITY IN LTS.		100	120	150	180	200
DIMENSIONS (MM)	A	155	160	160	160	160
	B	530	670	860	1100	1240
	C	155	160	160	160	160
	D	450	450	450	450	450
	E	840	990	1180	1420	1560
	F	80	80	80	80	80
APPROX. WT. IN kg		24.5	29.0	34.5	41.0	43.5
RATED INPUT-kW		1.6-1.8	2.9-3.1	2.9-3.1		
RATED PRESSURE		0.6 MPa				
POWER SUPPLY		Single Phase				
HEAT INSULATION		Polyurethane Form				
I/O SIZE-B.S.P.T		1/2"		3/4"		
I/O POSITION		Side				

1. LEGS
2. HEATING ELEMENT WITH ZINC ANODE
3. ELEMENT COVER
4. INLET PIPE
5. SAFETY VALVE
6. OUTLET PIPE

HORIZONTAL FLOOR MOUNTING “S” SERIES



MODEL NOS.		S100TT	S120TT	S150TT	S180TT	S200TT
CAPACITY IN LTS.		100	120	150	180	200
DIMENSIONS (MM)	A	170	170	170	170	170
	B	500	650	840	1080	1220
	C	170	170	170	170	170
	D	450	450	450	450	450
	E	15	15	15	15	15
	F	160	160	160	160	160
	G	45	45	45	45	45
	H	840	990	1180	1420	1560
APPROX. WT. IN kg		24.5	29.0	34.5	41.0	43.5
RATED INPUT-kW		1.6-1.8	2.9-3.1	2.9-3.1		
RATED PRESSURE		0.6 MPa				
POWER SUPPLY		Single Phase				
HEAT INSULATION		Polyurethane Form				
I/O SIZE-B.S.P.T		1/2"		3/4"		
I/O POSITION		Top				

1. MOUNTING BRACKETS
2. HEATING ELEMENT WITH ZINC ANODE
3. ELEMENT COVER
4. INLET PIPE
5. SAFETY VALVE
6. OUTLET PIPE
7. DRAIN VALVE



**“HOTEX” PREMIUM COPPER
THE FIT AND FORGET WATER HEATER**



GENERAL INFORMATION

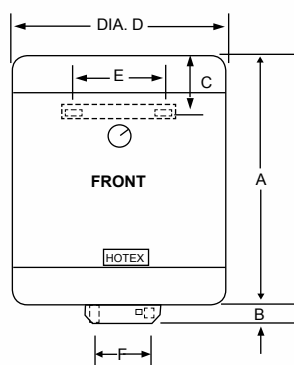
“HOTEX GL PLUS ELECTRIC WATER HEATERS” - A clear winner with great looks and matching performance.

Note:

- Single weld Steel Boiler: The thick steel boiler provides strength, while the extra thick inert glass coating provides protection against corrosion. This ensures clean and hygienic water for years.
- Magnesium Anode: Extra large size and easily replaceable. Provides Cathodic protection inside the boiler. It is attacked by the dissolved salts in water and is “sacrificed” in preference to the boiler body. This arrests corrosion and further enhances the life of the boiler.
- Heating Element: Flange type, easy to replace. The large flange opening ensures superior cleaning and uniform enameling, resulting in longer life. It also facilitates easy cleaning and maintenance during use. (Wattage: 1.6-1.8 & 2.1-2.4 kW)
- Gasket: Made from superior rubber to withstand higher temperature & pressure for a longer time.
- Testing: Every heater is checked for electricals and leakage. The Test Pressure is twice that of the Rated Pressure.



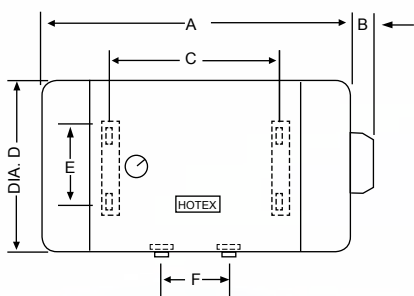
**“HOTEX” GL PLUS
THE FIT AND FORGET WATER HEATER**



VERTICAL WALL MOUNTING “EP” SERIES

MODEL NOS.		EP030BB	EP050BB	EP080BB	EP100BB
CAPACITY IN LTS.		30	50	80	100
DIMENSIONS (MM)	A	430	580	680	820
	B	45	45	45	45
	C	155	155	175	175
	D	400	400	450	450
	E	265	265	265	265
	F	100	100	100	100
NET WEIGHT (KGS.)		14.1	19.7	26.4	28.5
RATED INPUT-KW		1.6-1.8		2.1-2.4	
RATED PRESSURE		0.75 MPa			
POWER SUPPLY		Single Phase			
HEAT INSULATION		Polyurethane Form			
I/O SIZE-B.S.P.T		1/2"			
I/O POSITION		Bottom			

HORIZONTAL WALL MOUNTING “FP” SERIES



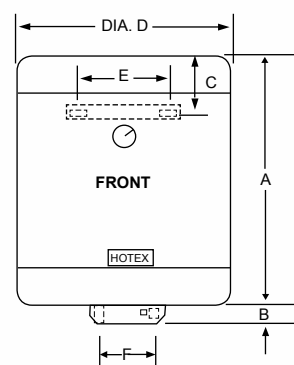
Model Nos.		FP030BB	FP050BB	FP080BB	FP100BB
Capacity in Lts.		30	50	80	100
Dimensions (mm)	A	430	450	680	820
	B	45	45	45	45
	C	160	200	360	500
	D	400	450	450	450
	E	265	265	265	265
	F	150	150	150	150
Net Weight (Kgs.)		14.1	19.7	26.4	28.5
Rated Input-kW		1.6-1.8		2.1-2.4	
Rated Pressure		0.75 MPa			
Power Supply		Single Phase			
Heat Insulation		Polyurethane Form			
I/O Size-B.S.P.T		1/2"			
I/O Position		Bottom			



“HOTEX” GL PLUS
THE FIT AND FORGET WATER HEATER

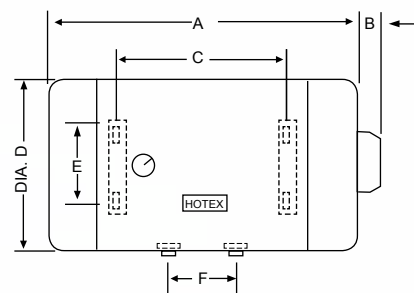
VERTICAL WALL MOUNTING “ EX ” SERIES

MODEL NOS		EX050BB	EX100BB
Capacity in Ltrs		50	100
Dimension in mm	A	500	900
	B	50	50
	C	180	165
	D	450	450
	E	265	265
	F	100	100
APPROX.WEIGHT IN KG		22	33
RATED INPUT-kW		1.6-1.8	2.1-2.4
RATED PRESSURE		0.75 MPa	
POWER SUPPLY		220-240V	
HEAT INSULATION		Polyurethane Form	
I/O SIZE BSPT		1/2"	
I/O POSITION		Bottom	



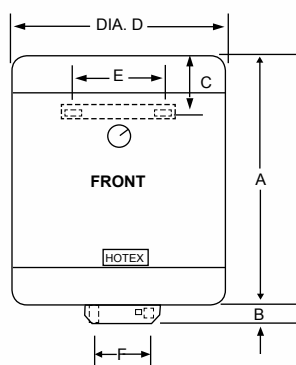
HORIZONTAL WALL MOUNTING “ FX ” SERIES

MODEL NOS		FX050BB	FX100BB
Capacity in Ltrs		50	100
Dimension in mm	A	500	880
	B	50	50
	C	200	500
	D	450	450
	E	265	265
	F	160	160
APPROX.WEIGHT IN KG		22	33
RATED INPUT-kW		1.6-1.8	2.1-2.4
RATED PRESSURE		0.75 MPa	
POWER SUPPLY		220-240V	
HEAT INSULATION		Polyurethane Form	
I/O SIZE BSPT		1/2"	
I/O POSITION		Bottom	



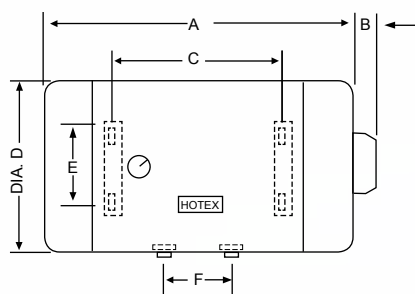
HOTEX GLASS LINED XTRA
EXTRA HOT ON FEATURES, COOL ON PRICE

VERTICAL WALL MOUNTING “ EC ” SERIES



MODEL NOS		EC050BB	EC100BB
Capacity in Ltrs		50	100
Dimension in mm	A	500	900
	B	50	50
	C	180	165
	D	450	450
	E	265	265
	F	100	100
APPROX.WEIGHT IN KG		22	23
RATED INPUT-kW		1.6-1.8	2.1-2.4
RATED PRESSURE		0.75 MPa	
POWER SUPPLY		220-240V	
HEAT INSULATION		Polyurethane Form	
I/O SIZE BSPT		1/2"	
I/O POSITION		Bottom	

HORIZONTAL WALL MOUNTING “ FC ” SERIES



MODEL NOS		FC050BB	FC100BB
Capacity in Ltrs		50	100
Dimension in mm	A	500	880
	B	50	50
	C	200	500
	D	450	450
	E	265	265
	F	160	160
APPROX.WEIGHT IN KG		22	33
RATED INPUT-kW		1.6-1.8	2.1-2.4
RATED PRESSURE		0.75 MPa	
POWER SUPPLY		220-240V	
HEAT INSULATION		Polyurethane Form	
I/O SIZE BSPT		1/2"	
I/O POSITION		Bottom	



HOTEX GLASS LINED XTRA
EXTRA HOT ON FEATURES, COOL ON PRICE



GENERAL INFORMATION

The boiler of the water heater is hot dip galvalinsed. Galvanising protects the iron sheet from rusting. The Hotex Premium boasts of a Magnesium Anode - The Magnesium Anode Plus feature. The Magnesium Anode provides cathodic protection inside the boiler. It is attacked by the dissolved salts in the water and is "sacrificed" in preference to the boiler body. This arrests corrosion and enhances the life of the boiler.

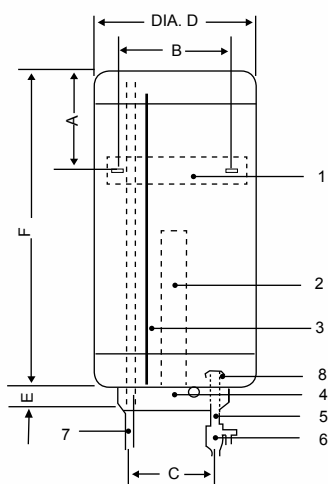
Note:

- Copper sheathed elements.
- Magnesium Anode protection - extra large size and replaceable.
- Thermal safety cut-out, manually resettable.
- Rated voltage - 220-240V, 50-60 Hz.
- Elements available in 1.1-1.2, 1.6-1.8, 2.1-2.4, 2.9-3.1, 4.7-5.2 & 8.0-9.0 kW rating.



HOTEX GI PREMIUM
EXTRA HOT ON FEATURES, COOL ON PRICE

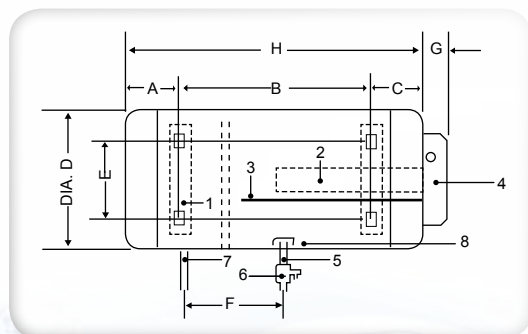
VERTICAL WALL MOUNTING “AP” SERIES



MODEL NO.		AP010BB	AP030BB	AP050BB	AP080BB	AP100BB	AP120BB	AP150BB
CAPACITY IN LTS.		10	30	50	80	100	120	150
DIMENSIONS (mm)	A	120	155	155	170	170	170	170
	B	210	265	265	265	265	265	280
	C	80	100	100	100	100	100	100
	D	250	400	400	450	450	450	450
	E	45	45	45	45	45	45	45
	F	450	370	560	690	840	990	1180
APPROX. WT. IN kg		7.0	11.0	13.5	18.0	21.0	30.0	36.0
RATED INPUT-KW		1.6 -1.8			2.1-2.4		2.9-3.1	
RATED PRESSURE	0.7 MPa							
POWER SUPPLY	Single Phase							
HEAT INSULATION	Polyurethane Foam							
I/O SIZE-B.S.P.T.	1/2"							3/4"
I/O POSITION	Bottom							

1. MOUNTING BRACKET
2. HEATING ELEMENT
3. EXTRA LARGE MAGNESIUM ANODE
4. ELEMENT COVER
5. INLET PIPE
6. SAFETY VALVE
7. OUTLET PIPE
8. ANTI-SPLASH MECHANISM

HORIZONTAL WALL MOUNTING “BP” SERIES



MODEL NOS.		BP010BB	BP030SS	BP050BB	BP080BB	BP100BB	BP120BB	BP150BB
Capacity in Lts.		10	30	50	80	100	120	150
Dimensions (mm)	A	120	105	155	165	170	170	170
	B	210	160	250	360	500	650	840
	C	120	105	155	165	170	170	170
	D	250	400	400	450	450	450	450
	E	210	265	265	265	265	265	280
	F	220	**	160	160	160	160	160
	G	45	45	45	45	45	45	45
	H	450	370	560	690	840	990	1180
APPROX.WT.IN kg		7.0	11.0	13.5	18.0	21.0	30.0	36.0
RATED INPUT-KW		1.6 -1.8			2.1-2.4		2.9-3.1	
RATED PRESSURE		0.7 MPa						
POWER SUPPLY		Single Phase						
HEAT INSULATION		Polyurethane Foam						
I/O SIZE-B.S.P.T.		1/2"						3/4"
I/O POSITION		Bottom						

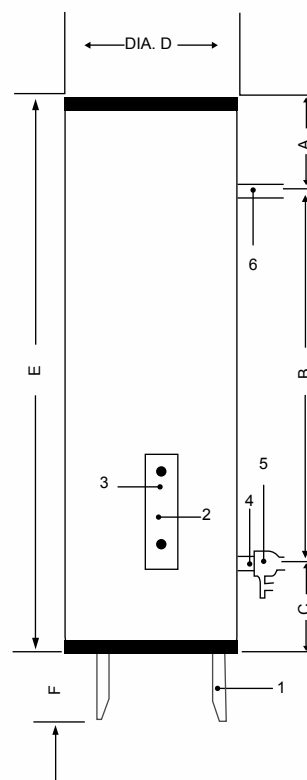
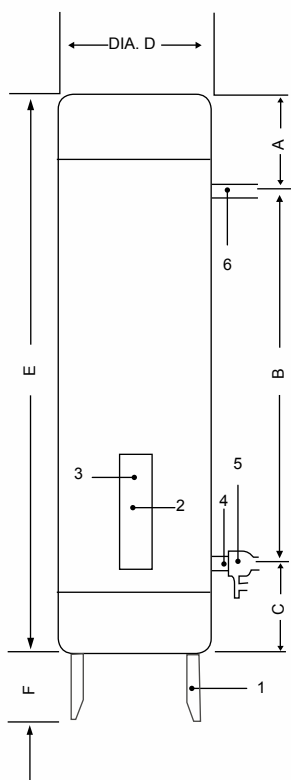
Note: ** In 30 Lts. inlet/outlet at side only - distance between pipes is 310 mm

1. MOUNTING BRACKETS
2. HEATING ELEMENT
3. EXTRA LARGE MAGNESIUM ANODE
4. ELEMENT COVER
5. INLET PIPE
6. SAFETY VALVE
7. OUTLET PIPE
8. ANTI-SPLASH MECHANISM



HOTEX GI PREMIUM
EXTRA HOT ON FEATURES, COOL ON PRICE

VERTICAL FLOOR MOUNTING “CP” SERIES



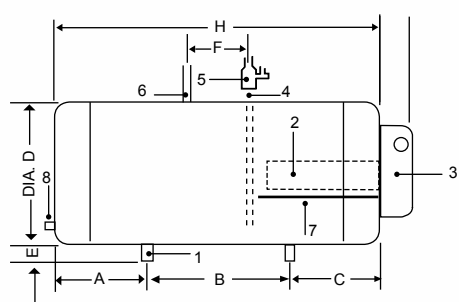
1. LEGS
2. HEATING ELEMENTS WITH MAGNESIUM ANODE
3. ELEMENT COVER
4. INLET PIPE
5. SAFETY VALVE
6. OUTLET PIPE

MODEL NOS.		CP100SS	CP120SS	CP150SS	CP180SS	CP200SS	CP300SS	CP400SS	CP500SS
CAPACITY IN LTS.		100	120	150	180	200	300	400	500
REF. DIAG. NO.		1					2		
Dimensions (mm)	A	155	160	160	160	160	290	290	290
	B	530	670	860	1100	1240	1220	1220	1220
	C	155	160	160	160	160	290	290	290
	D	450	450	450	450	450	560	640	710
	E	840	990	1180	1420	1560	1800	1800	1800
	F	80	80	80	80	80	80	80	80
APPROX.WT.IN kg		21.0	30.0	36.0	42.0	47.0	71.0	81.0	101.0
RATED INPUT-KW		1.6-1.8	2.9-3.1				4.7-5.2	8.0-9.0	
RATED PRESSURE		0.7 MPa					0.4 MPa		
POWER SUPPLY		Single Phase					Three Phase		
HEAT INSULATION		Polyurethane Foam					Fiber Glass		
I/O SIZE-B.S.P.T.		1/2"		3/4"					
I/O POSITION		Side							

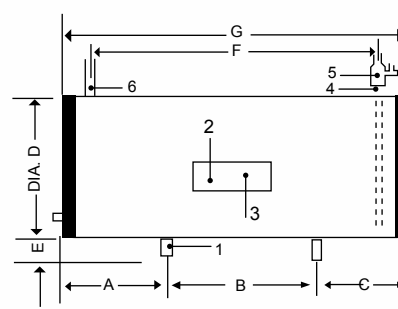


HOTEX GI PREMIUM
EXTRA HOT ON FEATURES, COOL ON PRICE

HORIZONTAL FLOOR MOUNTING “DP” SERIES



1. MOUNTING BRACKETS
2. HEATING ELEMENTS WITH MAGNESIUM ANODE
3. ELEMENT COVER
4. INLET PIPE
5. SAFETY VALVE
6. OUTLET PIPE
7. EXTRA LARGE MAGNESIUM ANODE
8. DRAIN VALVE



MODEL NOS.		DP100TT	DP120TT	DP150TT	DP180TT	DP200TT	DP300TT	DP400TT	DP500TT
CAPACITY IN LTS.		100	120	150	180	200	300	400	500
REF. DIAG. NO.		1					2		
Dimensions (mm)	A	170	170	170	170	170	480	480	480
	B	500	650	840	1080	1220	840	840	840
	C	170	170	170	170	170	480	480	480
	D	450	450	450	450	450	560	640	710
	E	15	15	15	15	15	60	60	60
	F	160	160	160	160	160	1220	1220	1220
	G	45	45	45	45	45	1800	1800	1800
	H	840	990	1180	1420	1560	-	-	-
APPROX.WT.IN kg		21.0	30.0	36.0	42.0	47.0	71.0	81.0	101.0
RATED INPUT-kW		1.6-1.8	2.9-3.1				4.7-5.2	8.0-9.0	
RATED PRESSURE		0.7 MPa					0.4 MPa		
POWER SUPPLY		Single Phase					Three Phase		
HEAT INSULATION		Polyurethane Foam					Fiber Glass		
I/O SIZE-B.S.P.T.		1/2"		3/4"					
I/O POSITION		Top							

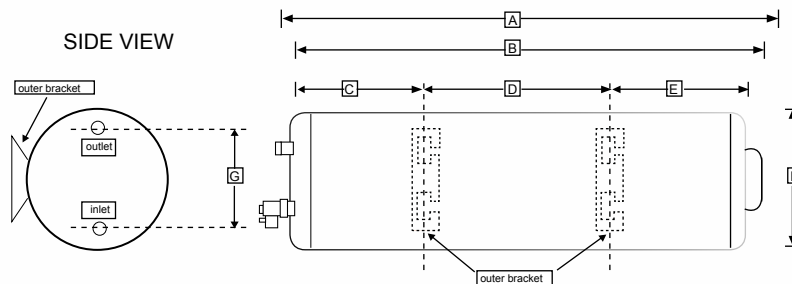


HOTEX GI PREMIUM
EXTRA HOT ON FEATURES, COOL ON PRICE



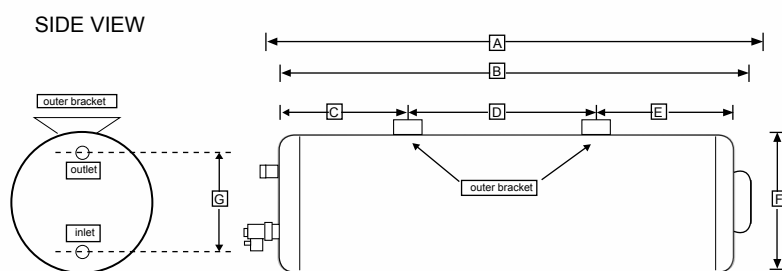
Specially designed and crafted for concealed fitment above the false ceiling. Available in 35 and 50 liters configurations.

HOTEX SLIM (H.W.M) DIMENSIONS



MODEL NOS	CAPACITY	A	B	C	D	E	F	G
BS035SS	35	780	710	155	400	155	295	220
BS050SS	50	1060	990	155	680	155	295	220
RATED INPUT-KW	1.6-1.8							
RATED PRESSURE	0.7 MPa							
POWER SUPPLY	Single Phase							
HEAT INSULATION	Polyurethane							
I/O SIZE BSPT	1/2"							
I/O POSITION	Side							

HOTEX SLIM (H.C.M) DIMENSIONS



MODEL NOS	CAPACITY	A	B	C	D	E	F	G
BPS 035 SS	35	780	710	155	400	155	295	220
BPS 050 SS	50	1060	990	155	680	155	295	220
RATED INPUT-KW	1.6-1.8							
RATED PRESSURE	0.7 MPa							
POWER SUPPLY	Single Phase							
HEAT INSULATION	Polyurethane							
I/O SIZE BSPT	1/2"							
I/O POSITION	Side							



HOTEX SLIM
HOT ON FEATURES, COOL ON PRICE



GENERAL INFORMATION

The boiler of the water heater is hot dip galvanised. Galvanising protects the iron sheet from rusting. Hence, G.I. Heaters offer economy with long life.

Note:

- Copper sheathed elements.
- Rated voltage - 220-240V, 50-60 Hz.
- Available only from 10-100 lts. capacity.
- Elements available in 1.1-1.2, 1.6-1.8, 2.1-2.4 kW rating.

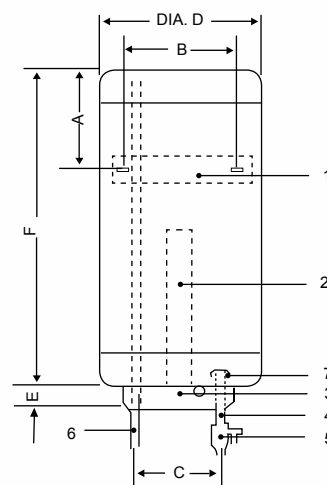


HOTEX GI REGULAR
HOT ON FEATURES, COOL ON PRICE

VERTICAL WALL MOUNTING “A” SERIES

MODEL NO.		A010BB	A030BB	A040BB	A050BB	A080BB	A100BB
CAPACITY IN LTS.		10	30	40	50	80	100
DIMENSIONS (mm)	A	120	155	155	155	170	170
	B	210	265	265	265	265	265
	C	80	100	100	100	100	100
	D	250	400	400	400	450	450
	E	45	45	45	45	45	45
	F	450	370	460	560	690	840
APPROX. WT. IN kg		7.0	11.0	12.0	13.5	18.0	21.0
RATED INPUT-KW		1.1 -1.2				2.1-2.4	
RATED PRESSURE		0.7 MPa					
POWER SUPPLY		Single Phase					
HEAT INSULATION		Polyurethane Foam					
I/O SIZE-B.S.P.T.		1/2"					
I/O POSITION		Bottom					

- | | |
|---------------------|--------------------------|
| 1. MOUNTING BRACKET | 4. INLET PIPE |
| 2. HEATING ELEMENT | 5. SAFETY VALVE |
| 3. ELEMENT COVER | 6. OUTLET PIPE |
| | 7. ANTI-SPLASH MECHANISM |

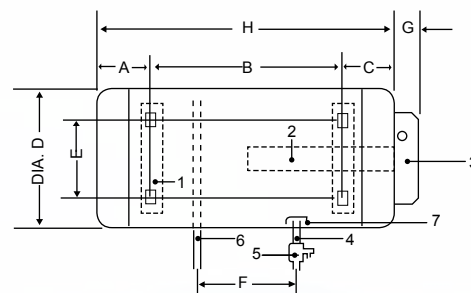


HORIZONTAL WALL MOUNTING “B” SERIES

MODEL NOS.		B010BB	B030SS	B040BB	B050BB	B080BB	B100BB
Capacity in Lts.		10	30	40	50	80	100
Dimensions (mm)	A	120	105	150	155	165	170
	B	210	160	160	250	360	500
	C	120	105	150	155	165	170
	D	250	400	400	400	450	450
	E	210	265	265	265	265	265
	F	220	**	160	160	160	160
	G	45	45	45	45	45	45
	H	450	370	460	560	690	840
APPROX.WT.IN kg		7.0	11.0	12.0	13.5	18.0	21.0
RATED INPUT-KW	1.1 -1.2					2.1-2.4	
RATED PRESSURE	0.7 MPa						
POWER SUPPLY	Single Phase						
HEAT INSULATION	Polyurethane Foam						
I/O SIZE-B.S.P.T.	1/2"						
I/O POSITION	Bottom						

Note: ** In 30 Lts. inlet/outlet at side only - distance between pipes is 310 mm

- | | |
|----------------------|--------------------------|
| 1. MOUNTING BRACKETS | 4. INLET PIPE |
| 2. HEATING ELEMENT | 5. SAFETY VALVE |
| 3. ELEMENT COVER | 6. OUTLET PIPE |
| | 7. ANTI-SPLASH MECHANISM |



HOTEX GI REGULAR
HOT ON FEATURES, COOL ON PRICE

Customized accessories

We offer additional features to address customer specifications these come at a nominal additional cost and are factory fitted.



Customized accessory
Safety Valve



Customized accessory
Temperature Pressure
Release Valve

Accessory	Function
Additional pressure relief valve	Acts as a step in safety valve to release pressure from the boiler in case it exceeds safe limits prescribed by the customer.
Temperature & pressure relief valve	A combined valve for additional safety, this valve gets into action should the temperature or pressure exceed safe limits.
Drain pipe with drain cock	For easy draining and cleaning of the boiler.
Anti vacuum valve	In order to prevent collapse of the boiler due to vacuum during draining, Anti Vacuum Valve bleeds in air thereby preventing vacuum.
Auto air vent valve	To facilitate venting of air during filling of water in the boiler, Auto Air Vent Valve automatically releases air. Must be installed vertically.
Pressure reducing valve	To address inlet water pressure up to 12 bar. <i>Caution: During the heating stage, water expands inside the boiler. This expansion exerts tremendous pressure on the boiler and is released through the Safety Valve. Consequently, dripping of water takes place from the Safety Valve. In order to avoid messing up of the area below the heater, fix a drain pipe to the Safety Valve leading to the drain. This dripping is a normal phenomenon that occurs with the use of Pressure Reducing Valve and/or Non Return Valve.</i>
Moving coil thermometer	For more accurate temperature indication
Magnetic de-scaler	Reduces scaling of elements due to hard water.

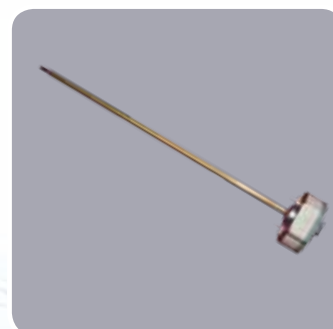
Flexibility

We offer a flexibility to address the customer specifications all our add on options are built on the standard offerings

Fittings	Scope of customization
Technology (Inner tank)	Galvanised iron, copper and Glasslined (The inner tank is coated with glass enamel and baked at high temperature)
Position of inlet and outlet (I/O) pipes	The last two digits in the model number indicate the position of inlet and outlet pipes respectively. B - Bottom: T-Top: S-Side, Alternate positions of Input/Output can be provided on request.
Size of I/O pipe	Can be changed to 1/2", 3/4" & 1"
Color	Standard color is white. However, a range of colors to suit your decor can be made.
Capacity	Standard capacity starts at 10 Ltrs and ends at 100 Ltrs. Special capacity starts at 150 Ltrs and can go up as per the customer requirements.
Wattage of heating elements	220 & 240 V, 50-60 Hz., 1.2/1.5/2.0/3.0/4.5/9.0 kW rating. 110 & 127 V, 50-60 Hz., 1.2/1.5 kW rating.
Wattage of heaters	Against the standard wattages indicated, higher wattages can be provided by increasing the wattage of the element, change to a 3-phase supply and increasing the number of heating stages
Voltage	Single phase heaters are calibrated to give their rated kW rating at 127 & 240 V, but are suitable for the range 110/270 V & 220/240 V respectively. Three phase heaters are likewise calibrated at 415/240 V and are suitable for 380/415 V 4 wire star connection on AC supply.



Customized accessory
Thermometer.



Customized accessory
Thermostat

Maintenance And Service

An electrical water heater goes through the wear and tear like any other electrical gadget in your homes/ offices while this gadget sits in the bathroom and is remembered only when it stops working. Please ensure that your water heater gets the preventive maintenance check at regular intervals of time.

The commonly occurring problems are:

- ❖ Scaling on heating elements - is a result of quality of water
- ❖ Dry heating - is a result of no water in the inner tank please ensure that there is a flow of water in the outlet tap/shower before switching ON the water heater, the flow of water indicates that the inner tank is full.

Useful Information

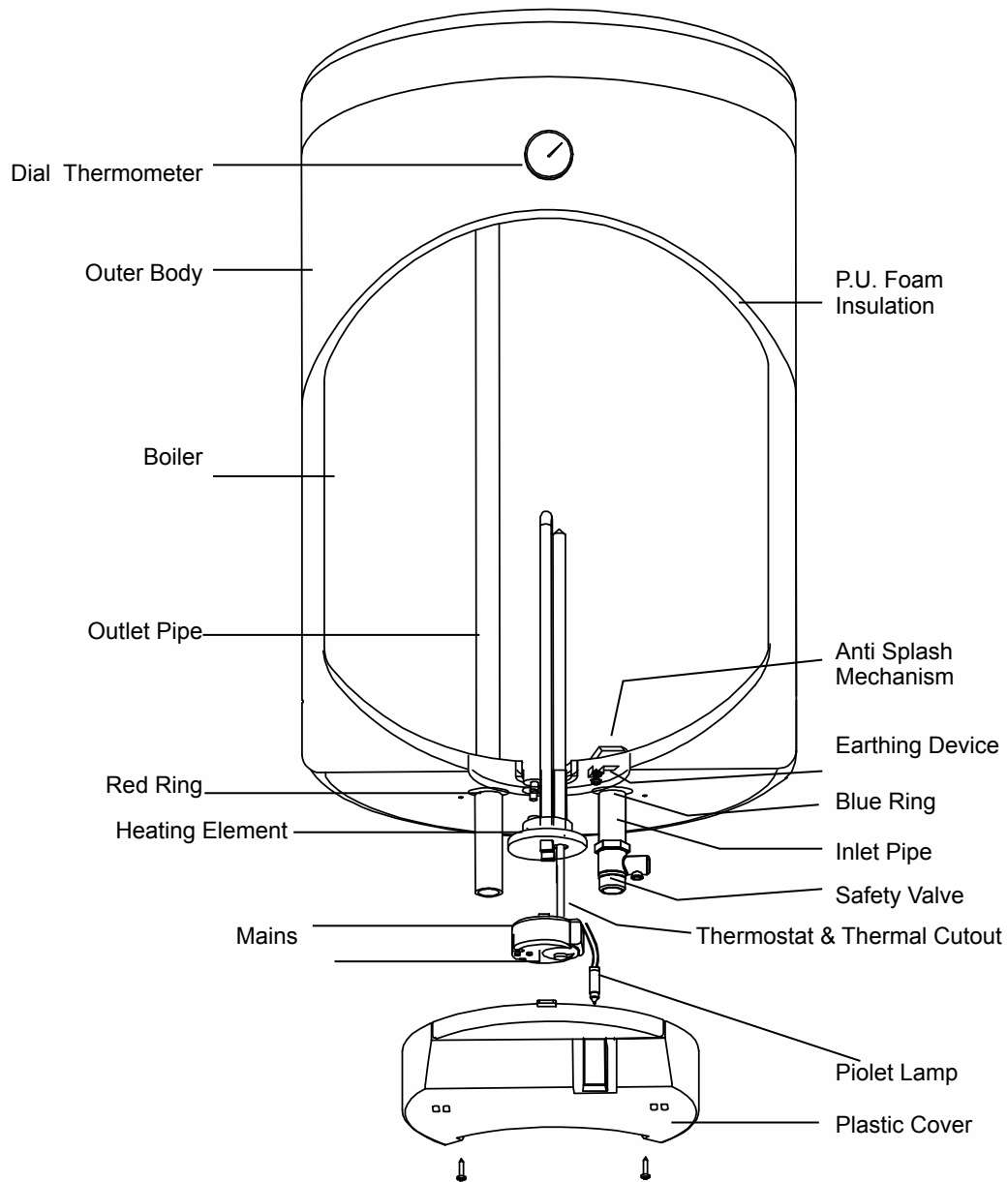
The duration of time taken for the water in the heater to reach a comfortable temperature level is dependant on:

- ❖ The wattage of heating element
- ❖ Input voltage
- ❖ Inlet water temperature
- ❖ Capacity of water heater

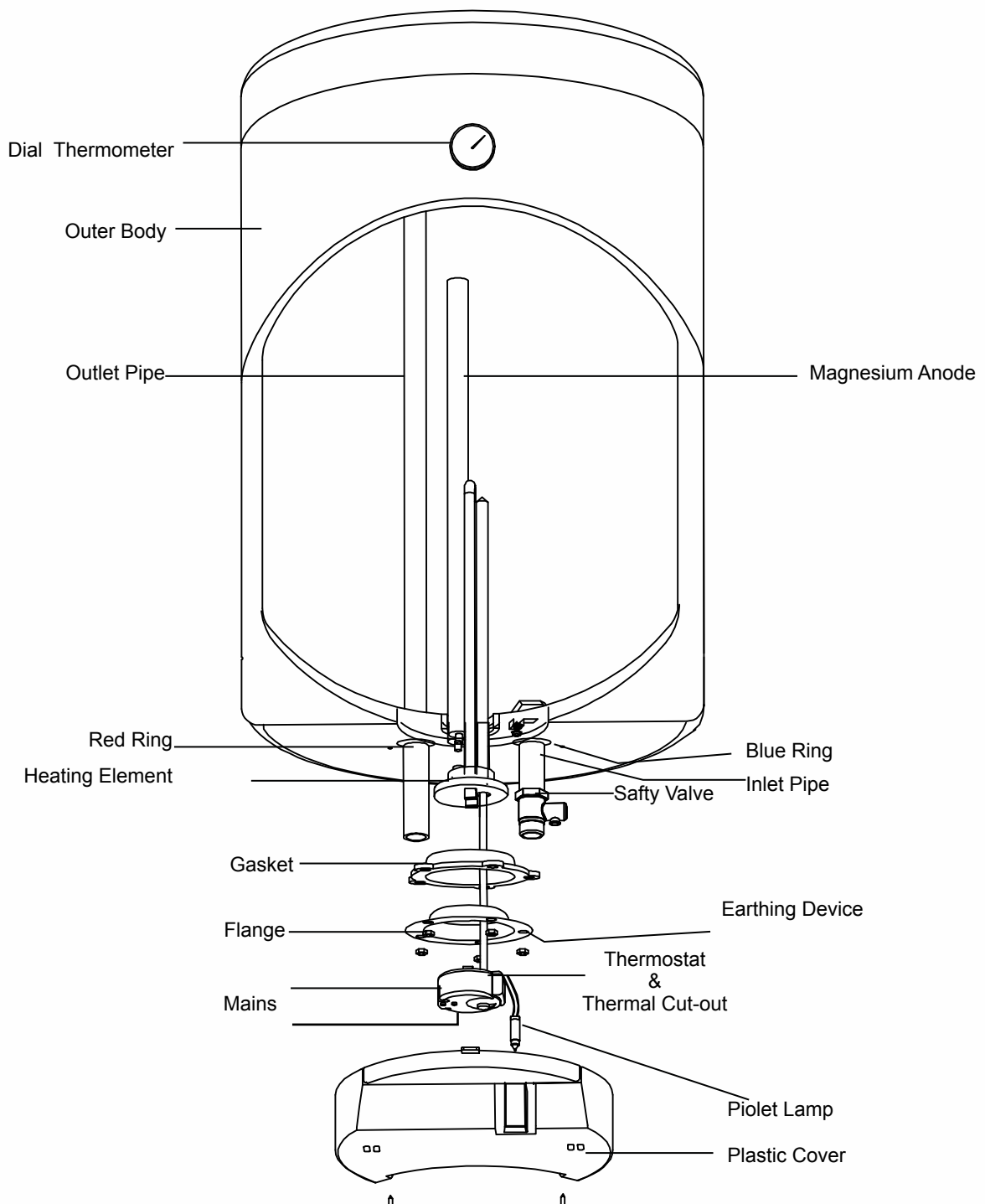
The below chart gives a approximate indication of the time taken for the water to reach a temperature level of around 50°C

RECOVERY CHART										
kW	1.2	1.5	2.0	3.0	4.0	3.6	4.5	6.0	9.0	12.0
PHASE	SINGLE					THREE				
CAPACITY IN LTS	APPROXIMATE TIME IN MINUTES TO HEAT THROUGH 50°C									
10	30	25	20	10	-	-	-	-	-	-
30	90	70	50	35	-	-	-	-	-	-
50	145	120	90	60	-	-	-	-	-	-
80	235	190	140	95	70	-	-	-	-	-
100	290	235	175	120	90	100	80	60	-	-
120	350	280	210	140	105	120	95	70	-	-
150	440	350	265	175	130	145	120	90	-	-
180	525	420	315	210	160	175	140	105	-	-
200	580	465	350	235	175	195	155	120	80	-
300	-	-	525	350	260	290	235	175	120	90
400	-	-	-	465	350	390	310	235	155	120
500	-	-	-	585	435	485	390	295	195	145





"HOTEX" GI REGULAR
HOT ON FEATURES, COLD ON PRICES



**"HOTEX" GLASS LINED
WATER HEATER**